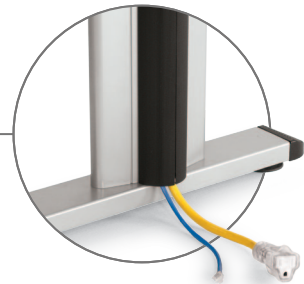


SurfaceWorks®



STATIC™

T R A I N I N G T A B L E



Static™

The Static C-Leg table is a simple, affordable, and attractive table that allows for easy wire management with the optional leg wire manager. Also available in a T-Leg version. *The table shown below features our WF5F Comfort™ profile wood edge finished in Michigan Cherry, and Innertone Light legs. The cover table features an MT1F knife profile PURTech® urethane edge in Dolphin, with Metallic Silver legs.*



Static T-Leg

OPTIONS/ACCESSORIES



Green Works™

All SurfaceWorks® tables are CARB compliant, and available in optional GreenWorks™ materials. Options include FSC® certified wood products, linoleum top surfaces, edges made from ABS, wood, bamboo or urethane, and NAUF (No Added Urea-Formaldehyde) substrate.



The "USGBC Member Logo" is a trademark owned by the U.S. Green Building Council and is used by permission.