

GROUP 1 LAMINATE COLORS

All colors shown are available as standard with either SurfaceWorks Original Lines or izzy+ Product Group; use either color code when ordering.

WOODGRAINS



■ L148 White Ash
izzy+ LZ7 White Ash



■ L149 Weathered Ash
izzy+ LZ8 Weathered Ash



■ L192 Silver Madera



■ L140 Smoky Brown Pear
izzy+ LCC Smoky Brown Pear



■ L150 Natural Ash
izzy+ LZ9 Natural Ash



■ L194 Pecan Strati



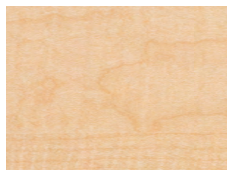
■ L184 Neo Walnut



■ L195 Mocha Strati



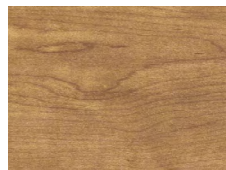
■ L185 Friar Walnut



■ L213 Norway Maple
izzy+ LTS Fusion Maple



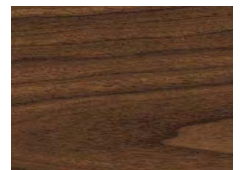
■ L219 Clear Maple



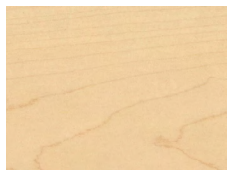
■ L181 Tawny Maple



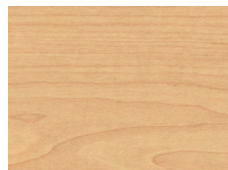
■ L208 Washington Cherry



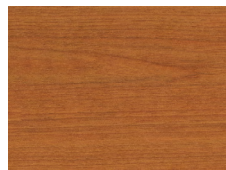
■ L154 Montana Walnut
izzy+ LVK Montana Walnut



■ L182 Hard Rock Maple



■ L153 Sugar Maple



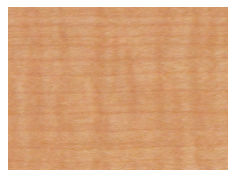
■ L152 Rainier Cherry
izzy+ LXW Wild Cherry



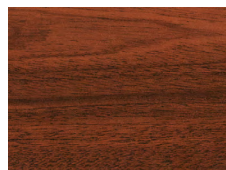
■ L186 Ginger Madera



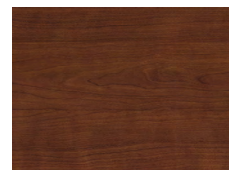
■ L212 Cocoa Pear



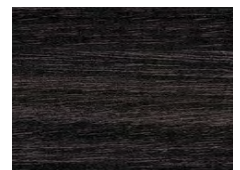
■ L206 Candlelight Maple
izzy+ LSV Monticello Maple



■ L151 Classic Mahogany



■ L183 Autumn Glow



■ L193 Black Madera

Key: ■ Matching EB edgeband available
◆ Matching urethane edge available

Colors shown are representations; please request actual material samples for maximum color fidelity.

GROUP 1 LAMINATE COLORS (cont.):

PATTERNS



L162 White Drops
izzy+ LWH White Drops



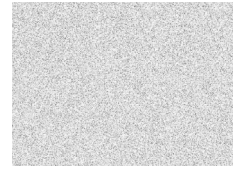
L253 Natural Patina



■ L188 Chateau Veer
izzy+ LNT Neutral Twill



L254 Stonehenge



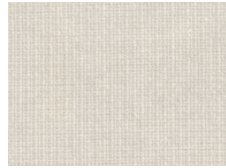
■ L201 Cool Rain



L281 Crema Masso



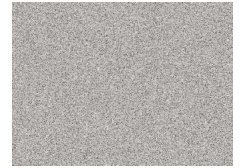
L270 Vanilla Gauze



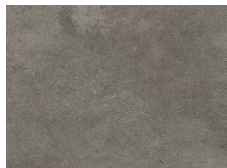
L161 Grey Mesh
izzy+ LRP Grey Mesh



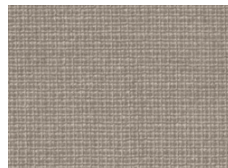
L279 Paloma Béton



■ L204 Summer Rain



L255 Thunder Island



L160 Pewter Mesh
izzy+ LRC Pewter Mesh



■ L190 Corteza Veer



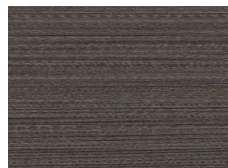
■ L189 Cloud Veer
izzy+ LSR Sarum Twill



L215 Urban Cinder



L218 Urban Carob



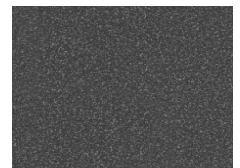
■ L191 Graphite Veer



L265 Lava Beach



L276 Chelsea Gauze



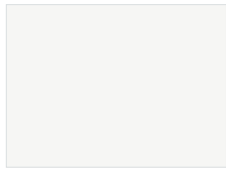
■ L203 Midnight Rain

Key: ■ Matching EB edgeband available
◆ Matching urethane edge available

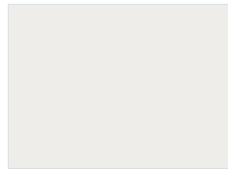
Colors shown are representations; please request actual material samples for maximum color fidelity.

GROUP 1 LAMINATE COLORS (cont.):

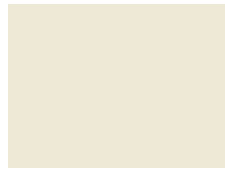
SOLIDS



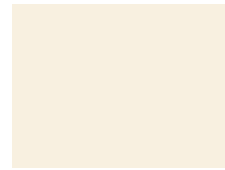
■ L348 Designer White



■ L623 Dover White
izzy+ LBT Dove White



■ L333 Pearl
izzy+ LDM Pearl



◆ 320 Antique White



◆ L359 Stone Cliff



◆ L064 Khaki Brown



◆ L007 Pepperdust



◆ L004 Folkstone
izzy+ LB4 Folkstone



◆ L349 Dove Gray



■ L687 Dorian Gray
izzy+ LDQ Platinum



◆ L006 Brownstone



◆ L394 Warm Stone



■ L686 Citadel
izzy+ LDA Citadel



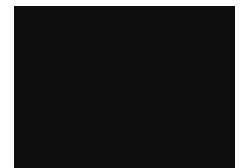
◆ L026 Shaker Gray



◆ L008 Graphite
izzy+ LDC Graphite



◆ L048 Anchor Gray



◆ L300 Black
izzy+ LAS Black

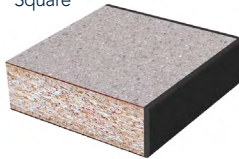
Key: ■ Matching EB edgeband available
◆ Matching urethane edge available

Colors shown are representations; please request actual material samples for maximum color fidelity.

EDGE BAND MODELS & COLORS

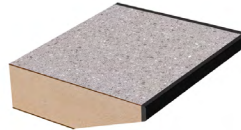
EDGE MODEL: EB

Profile: 1.25" Flat
 Application: A-Series (same profile on all sides)
 Material: 2mm ABS or 3mm flex PVC
 Corners: Square



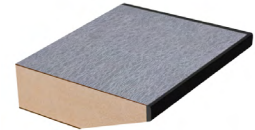
EDGE MODEL: PK4

Profile: 1.25" Knife with MDF reveal
 Application: A-Series (same profile on all sides)
 Material: 2mm ABS or 3mm flex PVC
 Corners: Square



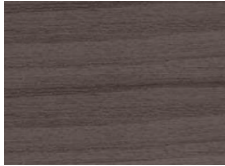







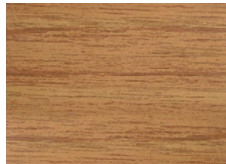
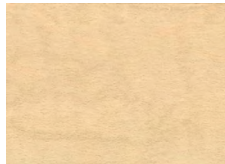
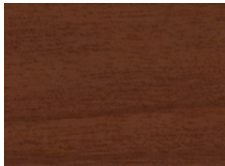
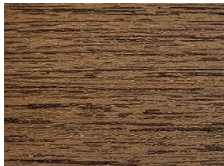

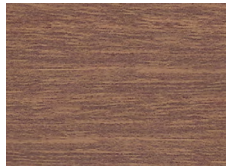




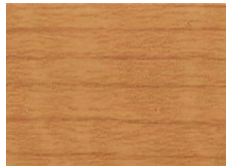

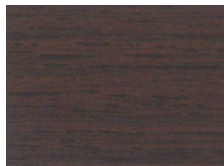
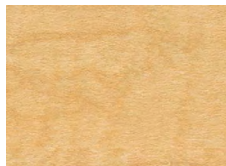
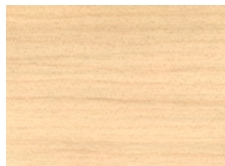
EDGE MODEL: PK4F

Profile: 1.25" Knife with MDF Reveal
 Application: F-Series (EB edgeband on non-user sides)
 Material: 2mm ABS or 3mm Flex PVC
 Corners: Square



STANDARD EB, PK4 & PK4F EDGE BAND COLORS*

WOODGRAINS

| | | | | |
|---|---|---|---|---|
|  |  |  |  |  |
| ■ E140 Smokey Brown Pear | ■ E148 White Ash | ■ E149 Weathered Ash | ■ E150 Natural Ash | ■ E151 Classic Mahogany |
|  |  |  |  |  |
| ■ E152 Rainier Cherry izzy+ E44 Wild Cherry | ■ E153 Sugar Maple | ■ E154 Montana Walnut izzy+ E47 Montana Walnut | ■ E181 Tawny Maple | ■ E182 Hard Rock Maple |
|  |  |  |  |  |
| ■ E183 Autumn Glow | ■ E184 Neo Walnut | ■ E185 Friar Walnut | ■ E186 Ginger Madera | ■ E192 Silver Madera |
|  |  |  |  |  |
| ■ E193 Black Madera | ■ E194 Pecan Strati | ■ E195 Mocha Strati | ■ E206 Candlelight Maple izzy+ E42 Monticello Maple | ■ E208 Washington Cherry |
| |  |  |  | |
| | ■ E212 Cocoa Pear | ■ E213 Norway Maple izzy+ E41 Fusion Maple | ■ E219 Clear Maple | |

KEY: ■ Matching Group 1 Laminate available
 ◆ Matching Urethane Edge available

*Additional colors are available; please inquire (availability varies).

Colors shown are representations; please request actual material samples for maximum color fidelity.

EDGE BAND MODELS & COLORS (CONT.)

STANDARD EB, PK4 & PK4F EDGE BAND COLORS* (CONT.)

| | | | | | | |
|-----------------|---|---|---|---|---|---|
| PATTERNS |  |  |  |  | | |
| | ■ E188 Chateau Veer | ■ E189 Cloud Veer | ■ E190 Corteza Veer | ■ E191 Graphite Veer | | |
| |  |  |  | | | |
| | ■ E201 Cool Rain | ■ E204 Summer Rain | ■ E203 Midnight Rain | | | |
| | METALLICS |  |  |  | | |
| | | E421 Delray Satin | E422 Oyster Gleam | E442 Satin Silver izzy+ E34 Satin Silver | | |
| SOLIDS | |  |  |  |  |  |
| | ◆ E004 Folkstone izzy+ E33 Folkstone | ◆ E006 Brownstone | ◆ E007 Pepperdust | ◆ E008 Graphite izzy+ E35 Graphite | ◆ E026 Shaker Gray | |
| |  |  |  |  |  | |
| | ◆ E048 Anchor Gray | ◆ E064 Khaki Brown | ◆ E089 Kodiak Brown | ◆ E300 Black izzy+ E37 Black | ◆ E320 Antique White | |
| |  |  |  |  |  | |
| | ◆ E323 Atlantis | ◆ E325 Cadet Blue | ■ E333 Pearl izzy+ E31 Neutral White | ◆ E338 HM Cool Grey Neutral | ◆ E343 HM Light Grey | |

KEY: ■ Matching Group 1 Laminate available
◆ Matching Urethane Edge available

*Additional colors are available; please inquire (availability varies).

Colors shown are representations; please request actual material samples for maximum color fidelity.

EDGE BAND MODELS & COLORS (CONT.)

STANDARD EB, PK4 & PK4F EDGE BAND COLORS* (CONT.)

| | | | | | |
|---|---|---|---|---|---|
| SOLIDS (CONT.) |  |  |  |  |  |
| | ■ E348 Designer White | ◆ E349 Dove Gray | ◆ E352 HM Soft White | ◆ E353 HM Light Tone | ◆ E354 HM Medium Tone |
| |  |  |  |  |  |
| | ◆ E359 Stone Cliff | ◆ E367 Platinum | ◆ E372 Bullseye | ◆ E376 Dolphin | ◆ E382 HM Warm Grey Neut. |
|  |  |  |  |  | |
| ◆ E385 HM Slate Grey | ◆ E386 HM Innertone | ◆ E387 HM Innertone Light | ◆ A394 Warm Stone | ◆ E395 Jute | |
|  |  |  |  | | |
| ◆ E396 Charcoal | E623 Dover White izzy+ E30 White | ◆ E686 Citadel izzy+ E36 Citadel | ◆ E687 Dorian Gray izzy+ E32 Platinum | | |

KEY: ■ Matching Group 1 Laminate available
 ◆ Matching Urethane Edge available

*Additional colors are available; please inquire (availability varies).

Colors shown are representations; please request actual material samples for maximum color fidelity.

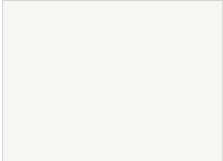
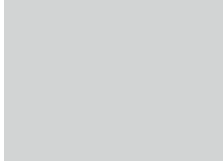





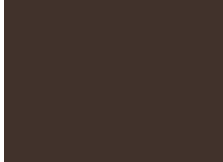
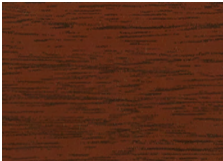
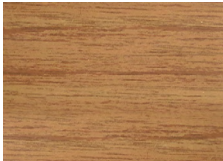
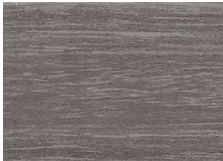


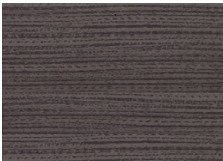


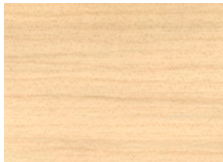
EDGE BAND MODELS & COLORS

EDGE MODEL: EBR

Profile: 1.25" Flat
 Application: A-Series (same profile on all sides)
 Material: 3mm flex PVC
 Corners: Radius



STANDARD EBR EDGE BAND COLORS*:

| | | | | | |
|-------------------|---|---|---|---|---|
| SOLIDS |  |  |  |  |  |
| | ■ E348 Designer White | ◆ E004 Folkstone | ◆ E026 Shaker Gray | ◆ E048 Anchor Gray | ◆ E300 Black |
| |  |  |  | | |
| | ◆ E007 Pepperdust | ◆ E395 Jute | ◆ E089 Kodiak Brown | | |
| WOODGRAINS |  |  |  |  |  |
| | ■ E151 Classic Mahogany | ■ E181 Tawny Maple | ■ E192 Silver Madera | ■ E193 Black Madera | ■ E208 Washington Cherry |
| PATTERNS |  |  | |  |  |
| | ■ E191 Graphite Veer | ■ E188 Chateau Veer | | ■ E212 Cocoa Pear | ■ E219 Clear Maple |

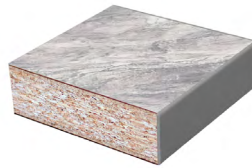
KEY: ■ Matching Group 1 Laminate available
 ◆ Matching Urethane Edge available

Additional colors are available; please inquire (availability varies).
 Colors shown are representations; please request actual material samples for maximum color fidelity.

EDGE BAND MODELS & COLORS

EDGE MODEL: AB

Profile: 1.25" Flat
 Application: A-Series (same profile on all sides)
 Material: 2mm ABS
 Corners: Square



STANDARD AB EDGE BAND COLORS:

| | | | | | | |
|---|---|--|---|--|---------------------------------|--------------------|
| SOLIDS | | | | | | |
| | ■ A348 Designer White | ■ A623 Dover White izzy+ E30 White | ■ A004 Folkstone izzy+ E33 Folkstone | A343 HM Light Grey | ■ A349 Dove Gray | |
| | | | | | | |
| | ■ A333 Pearl izzy+ E31 Neutral White | ■ A687 Dorian Gray izzy+ E32 Platinum | ■ A394 Warm Stone | ■ A686 Citadel izzy+ E36 Citadel | A385 HM Slate Grey | |
| | | | | | | |
| | A352 HM Soft White | ■ A006 Brownstone | ■ A008 Graphite izzy+ E35 Graphite | ■ A048 Anchor Gray | ■ A300 Black izzy+ E37 Black | |
| | WOODGRAINS | | | | | |
| | | ■ A152 Rainier Cherry izzy+ E44 Wild Cherry | ■ A154 Montana Walnut izzy+ E47 Montana Walnut | ■ A183 Autumn Glow | ■ A182 Hard Rock Maple | ■ A153 Sugar Maple |
| | | METALLIC | | | | |
| A442 Satin Silver izzy+ E34 Satin Silver | | | ■ A213 Norway Maple izzy+ E41 Fusion Maple | ■ A206 Candlelight Maple izzy+ E42 Monticello Maple | | |

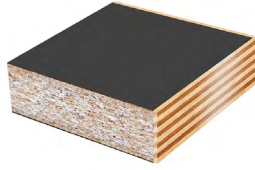
KEY: ■ Matching Group 1 Laminate available
 ◆ Matching Urethane Edge available

Additional colors are available; please inquire (availability varies).
 Colors shown are representations; please request actual material samples for maximum color fidelity.

EDGE BAND MODELS & COLORS

EDGE MODEL: EB9

Profile: 1.25" Flat
 Application: A-Series (same profile on all sides)
 Material: 2mm Premium 3D Look
 Corners: Square



STANDARD EB9 PREMIUM EDGE BAND COLORS:

METALLIC

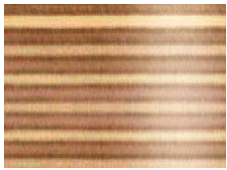


G490 3D Brushed Aluminum



G491 3D Brushed Stainless

WOODGRAINS



G495 3D Multiplex Nature



G496 3D Multiplex Beech

Colors shown are representations; please request actual material samples for maximum color fidelity.

VINYL T-EDGE MODELS & COLORS

EDGE MODEL: **T4**

Profile: 0.25" x 1.25" bumper
 Application: A-Series (same profile on all sides)
 Material: Vinyl T-Edge
 Corners: Radius



STANDARD COLORS*:



◆ T006 Brownstone

■ ◆ T300 Black

EDGE MODEL: **T5**

Profile: 0.3" x 1.75" Drop Bumper
 Application: A-Series - same profile on all sides
 Material: Vinyl T-Edge
 Corners: Radius



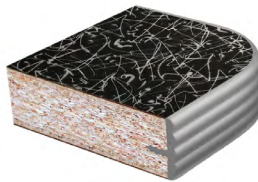
STANDARD COLOR:



■ ◆ T300 Black

EDGE MODEL: **T10**

Profile: 0.15" x 1.25" Ribbed
 Application: A-Series (same profile on all sides)
 Material: Vinyl T-Edge
 Corners: Radius



STANDARD COLOR:



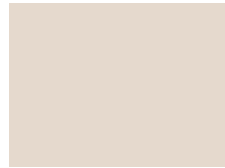
T438 Ribbed Chromium

EDGE MODEL: **T8**

Profile: 0.5" x 1.25" Bullnose
 Application: A-Series (same profile on all sides)
 Material: Vinyl T-Edge
 Corners: Radius



STANDARD COLORS*:



◆ T090 Light Beige

■ ◆ T006 Brownstone

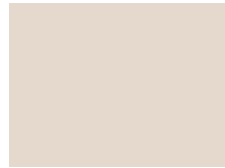
■ ◆ T300 Black

EDGE MODEL: **T8F**

Profile: 0.5" x 1.25" Bullnose
 Application: F-Series (EB edgeband on non-user sides)
 Material: Vinyl T-Edge
 Corners: Square



STANDARD COLORS*:



◆ T090 Light Beige

■ ◆ T006 Brownstone

■ ◆ T300 Black

KEY: ■ Matching Group 1 Laminate available
 ◆ Matching Urethane Edge available

*Additional colors are available; please inquire (availability varies).

Colors shown are representations; please request actual material samples for maximum color fidelity.

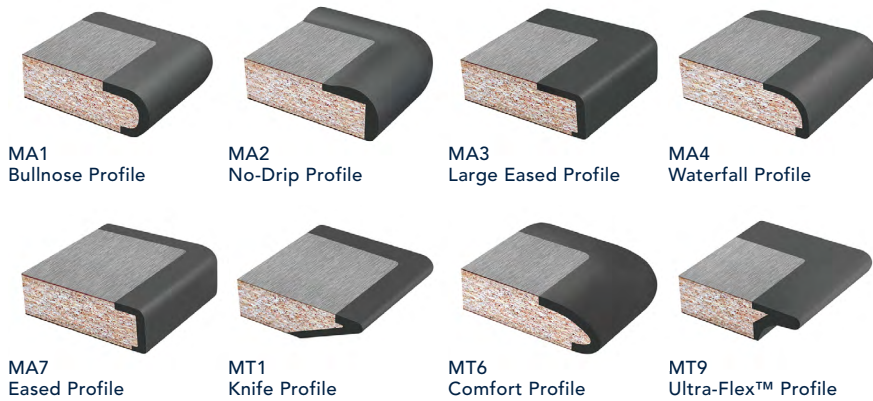
URETHANE EDGE MODELS & COLORS

A-SERIES URETHANE EDGE MODELS - Urethane profile is the same on all sides of the table top

Ideal when people are seated all around the table, such as for conference, meeting & hospitality spaces. A-Series urethane edge models are available in all 60 standard colors and custom-matched colors.

PURTECH

(matte finish)



PURWOOD

(woodgrain embossed finish)

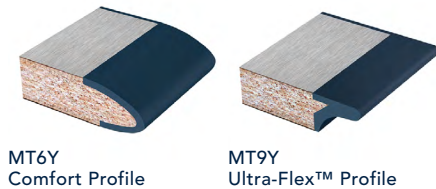


Y-SERIES URETHANE EDGE MODELS - Urethane edge profile is on the user side of the table top, with thin, flat urethane continuing seamlessly on the remaining non-user sides.

Primarily used for training tables, Y-Series edge models allow for flush connections between tops when connected or placed side-by-side, and colors are not restricted as they are with F-Series models. Y-Series urethane edge models are available in all 60 standard colors and custom-matched colors.

PURTECH

(matte finish)

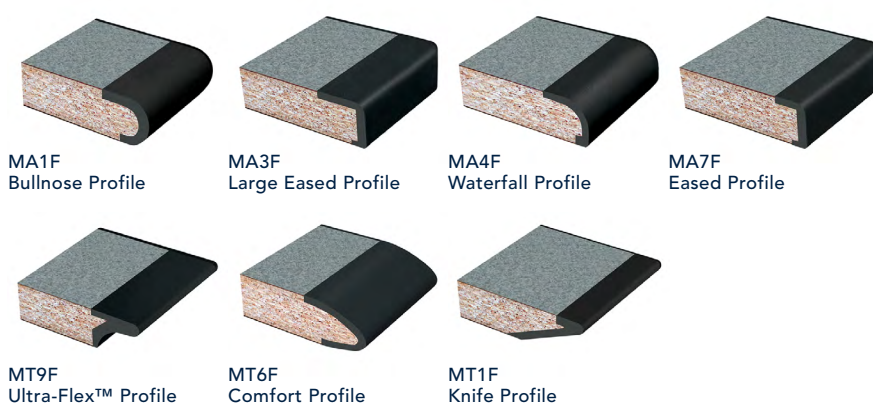


F-SERIES URETHANE EDGE MODELS - Urethane edge profile is on the user side only; non-user sides consist of EB edgeband.

Primarily for training tables and worksurfaces, this allows for flush connections between tops when connected or placed side-by-side, and the flexible mold process accommodates non-standard top lengths and some custom curved shapes. Standard colors for F-Series urethane edge models are generally restricted to those that are also available in EB edgeband (denoted by **F**), however you may specify a non-matching edgeband color.

PURTECH

(matte finish)



PURWOOD

(woodgrain embossed finish)



URETHANE EDGE MODELS & COLORS (CONT.)
STANDARD URETHANE EDGE COLORS

All urethane colors shown are available as standard with SurfaceWorks original product lines in both PURTech and PURWood edge models; use either color code when ordering. Due to manufacturing constraints, non-izzy designated colors may be available with izzy+ products based on order volume and other factors, will require an upcharge, and will be considered on a case-by-case basis.

CUSTOM COLOR MATCHING

Send us a color sample and we will create a matching urethane pigment mixture for your specific project. Call for a quote.

| | | | | |
|---|---|---|--|---|
|  |  |  |  |  |
| ■ F U004 Folkstone | ■ F U006 Brownstone | ■ F U007 Pepperdust | ■ FZ U008 Graphite izzy+ U05 Otter | U009 Mississippi Mud |
|  |  |  |  |  |
| U023 French Roast | ■ F U026 Shaker Gray | U028 Otter | U035 Root Beer | F U043 Wall Street |
|  |  |  |  |  |
| ■ F U048 Anchor Gray | U051 Kiwi | U059 Brown | ■ F U064 Khaki Brown | U070 Tree Frog |
|  |  |  |  |  |
| U071 Tangerine | Z U084 Black Walnut izzy+ U32 Beaver | F U089 Kodiak Brown | ■ FZ U300 Black izzy+ U06 Black Bear | U313 Nutshell |
|  |  |  |  |  |
| ■ F U320 Antique White | F U323 Atlantis | F U325 Cadet Blue | U326 Copper Canyon | U328 Periwinkle |
|  |  |  |  |  |
| U329 Sweet Maple | F U338 HM Cool Grey Neut. | F U343 HM Light Grey | U347 Moon Shadow | ■ FZ U349 Dove Gray izzy+ U02 Wolf |

Key: ■ Matching Group 1 Laminate available
 F Available in F-Series edge models (with matching EB edgeband)
 Z izzy+ color

Colors shown are representations; please request actual material samples for maximum color fidelity.

URETHANE EDGE MODELS & COLORS (CONT.)

STANDARD URETHANE EDGE COLORS (cont.):

| | | | | |
|---|---|---|--|---|
|  |  |  |  |  |
| F U352 HM Soft White | F U353 HM Light Tone | F U354 HM Medium Tone | ■ F U359 Stone Cliff | U363 Iron Ore |
|  |  |  |  |  |
| F U372 Bullseye | F U376 Dolphin | U379 Quarry | F U382 HM Warm Grey Neut. | F U385 HM Slate Grey |
|  |  |  |  |  |
| F U386 HM Innertone | F U387 HM Innertone Light | U393 Tiger Lily | F U395 Jute | F U396 Charcoal |
|  |  |  |  |  |
| Z U504 Saxon Gray izzy+ U04 Dolphin | Z U521 Parakeet izzy+ U21 Parakeet | Z U522 Hippo izzy+ U22 Hippo | Z U523 Oriole izzy+ U23 Oriole | Z U525 Koala izzy+ U25 Koala |
|  |  |  |  |  |
| Z U526 Kangaroo izzy+ U26 Kangaroo | U638 Praline | U649 Bayou | U650 Blarney | U654 Daisy |
|  |  |  |  |  |
| U655 Grape | U664 Graham Cracker | Z U673 Blue Heron izzy+ U13 Blue Heron | Z U675 Jay izzy+ U14 Jay | Z U676 Geranium izzy+ U24 Cardinal |

Key: ■ Matching Group 1 Laminate available
 F Available in F-Series edge models (with matching EB edgeband)
 Z izzy+ color

Colors shown are representations; please request actual material samples for maximum color fidelity.

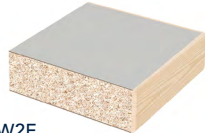
WOOD EDGE MODELS & FINISHES (CONT.)

A-SERIES WOOD EDGE MODELS:

Wood edge profile is on all sides of the table top.



WA2
Flat Profile with Overlay



W2E
Thin Edgeband Profile



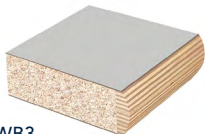
WB1
Small Eased Profile



WC6
Medium Eased Profile



WD1
Large Eased Profile



WB3
Bumper Profile with Overlay



WC1
Bevel Profile



WC2
Waterfall Profile



WC3
Small Bullnose Profile



WD2
Large Bullnose Profile



WD5
Traditional Ogee Profile



WC5
Reeded Profile



WF2
Flat Knife Profile



WF4
Rounded Knife Profile



WF5
Comfort Profile

A-SERIES DROP WOOD EDGE MODELS:

Drop wood edge profile on all sides of the table top. *Asterisked profiles are available in radius corners.



WB1D
Small Eased Drop Profile



WC6D
Medium Eased Drop Profile



WD1D
Large Eased Drop Profile



WC2D
Waterfall Drop Profile



WD2D
Large Bullnose Drop Profile



WC1D
Bevel Drop Profile



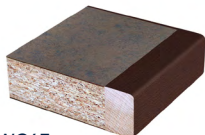
WC5D
Reeded Drop Profile

F-SERIES WOOD EDGE MODELS (for worksurfaces, classroom and training tables):

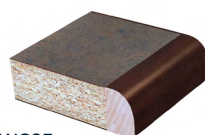
Profile on user side; flat wood edgeband on non-user/connecting sides.



WB1F
Small Eased Profile F-Series



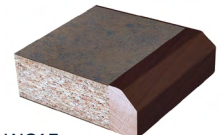
WC6F
Med. Eased Profile F-Series



WC2F
Waterfall Profile F-Series



WC3F
Sm. Bullnose Profile F-Series



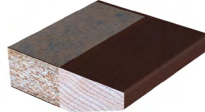
WC1F
Bevel Profile F-Series



WF4F
Rounded Knife Profile F-Series



WF5F
Comfort Profile F-Series



WF2F
Flat Knife Profile F-Series

WOOD EDGE MODELS & FINISHES (CONT.)

STANDARD WOOD EDGE FINISHES



W720
Natural Maple



W700
Natural Cherry



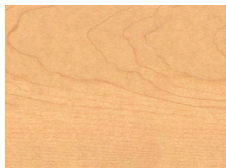
W778
Harvest



W790
Cordial



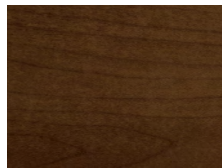
W784
Dover



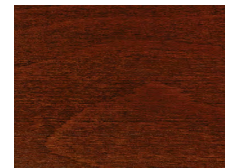
W789
Carriage Maple



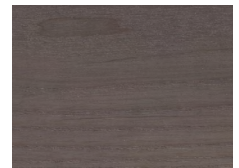
W701
Amber Cherry



W781
Heritage



W773
Old English Mahogany



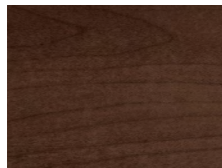
W777
Silverwood



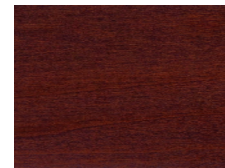
W787
Jefferson Maple



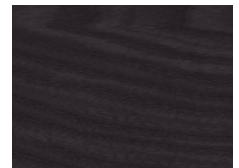
W705
Sedona Cherry



W788
Wynwood



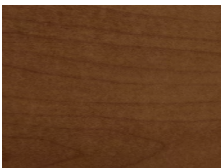
W775
Bombay



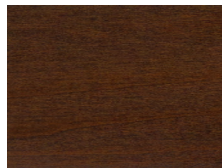
W780
Gris



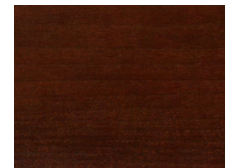
W791
Plywood Multiplex
(available with WA2 & WB3 only)



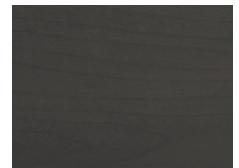
W776
Gingerwood



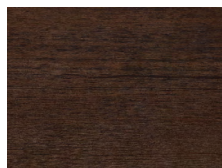
W748
Judicial Walnut



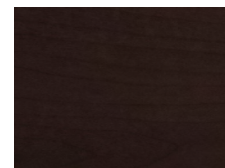
W703
Parlor Cherry



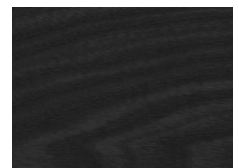
W785
Komur



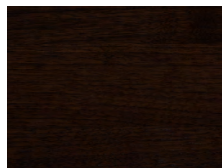
W783
Java



W782
Bracken



W786
Ombra



W779
Espresso



W704
Michigan Cherry

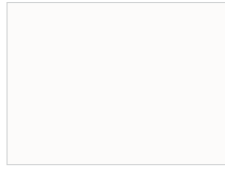


W732
Ebony

Finish name does not necessarily represent actual wood species used
 Custom stain matching available; please inquire
 Colors shown are representations; please request actual material samples for maximum color fidelity

TABLE BASE FINISHES
SOLIDS


P300 Black



P348 Designer White



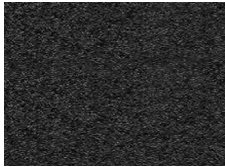
P378 HW Sand



P387 Inertone Light



P354 Medium Tone

TEXTURES


P406 Black Wrinkle

METALLICS


P448 Polished Chrome



P431 Metallic Silver



P466 Champagne Metallic

Finish availability varies with each base style; please refer to pricelist

Additional colors may be available; please inquire

Colors shown are representations; please request actual material samples for maximum color fidelity

RAPPORT CASEGOOD COLOR PALETTE

The following subset of Group 1 Laminate colors are standard for shaded areas found in the Rapport Color Selection Guide (next page). Other colors are available; please request a quote.

PATTERNS



L190 Corteza Veer



L189 Cloud Veer
izzy+ LSR Sarum Twill

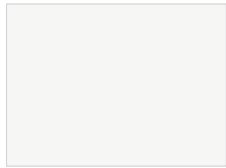


L188 Chateau Veer
izzy+ LNT Neutral Twill



L191 Graphite Veer

SOLIDS



■ L348 Designer White



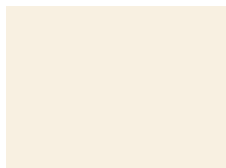
L004 Folkstone
izzy+ LB4 Folkstone



L026 Shaker Gray



■ L300 Black
izzy+ LAS Black



320 Antique White



■ L359 Stone Cliff



■ L064 Khaki Brown



■ L006 Brownstone



■ L008 Graphite
izzy+ LDC Graphite

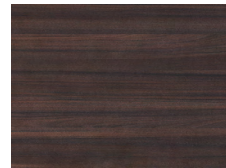
WOODGRAINS



■ L219 Clear Maple



L192 Silver Madera



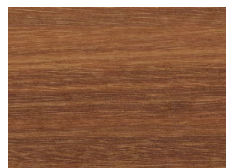
L212 Cocoa Pear



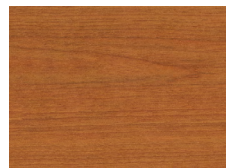
L193 Black Madera



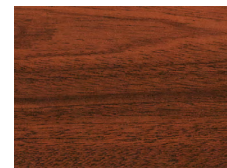
L153 Sugar Maple



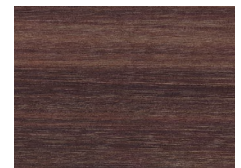
L186 Ginger Madera



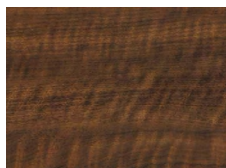
■ L152 Rainier Cherry
izzy+ LXW Wild Cherry



■ L151 Classic Mahogany



L187 Sable Madera



L185 Friar Walnut



L208 Washington Cherry

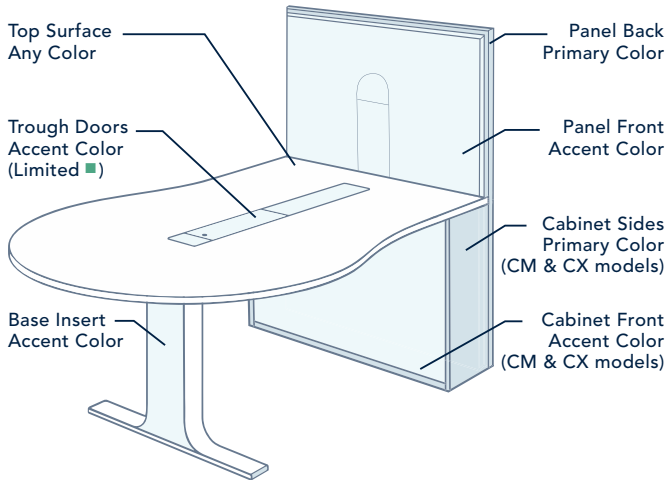
KEY: ■ Power/data trough door color

Colors shown are representations; please request actual material samples for maximum color fidelity.

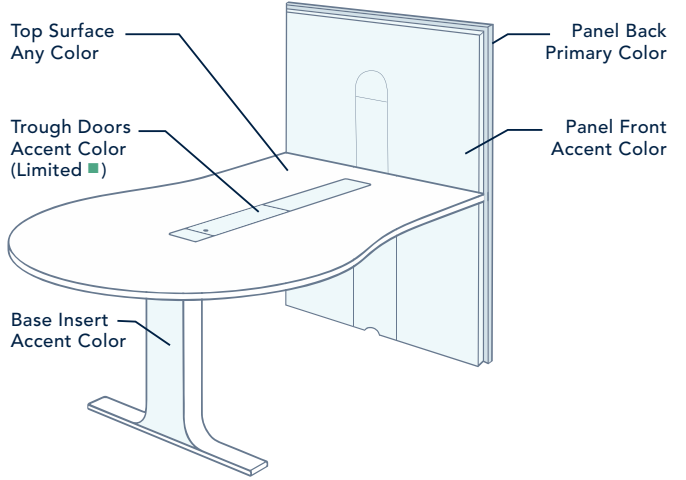
RAPPORT COLOR SELECTION GUIDE

Select Primary and Accent colors based on charts below. Rapport Casewood Color Palette is standard for the shaded areas.

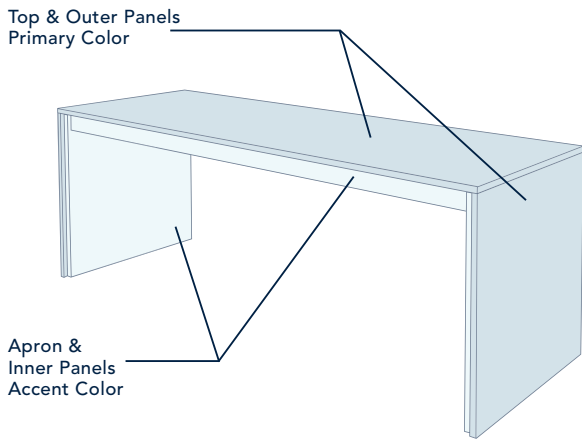
RAPPORT MEDIA TABLE MODELS CM & CX



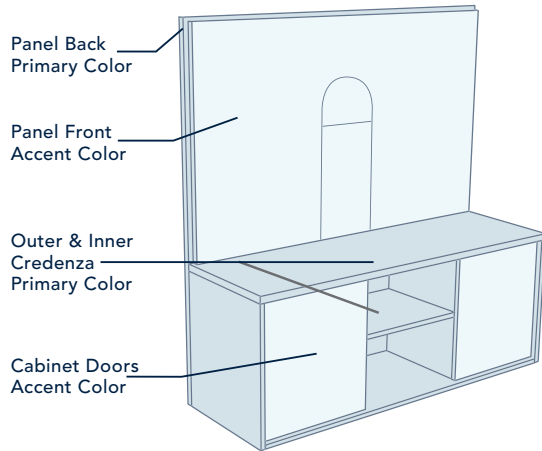
RAPPORT MEDIA TABLE MODELS PM & PX



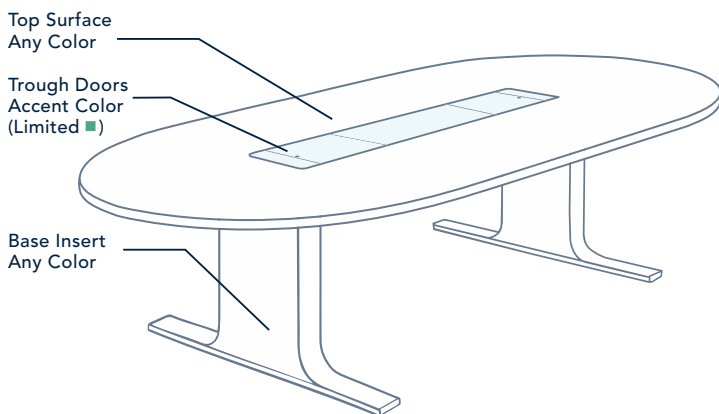
RAPPORT ISLAND



RAPPORT CREDENZAS



RAPPORT CONFERENCE T-LEG & X-BASE



RAPPORT ACCENT T-LEG & X-BASE

