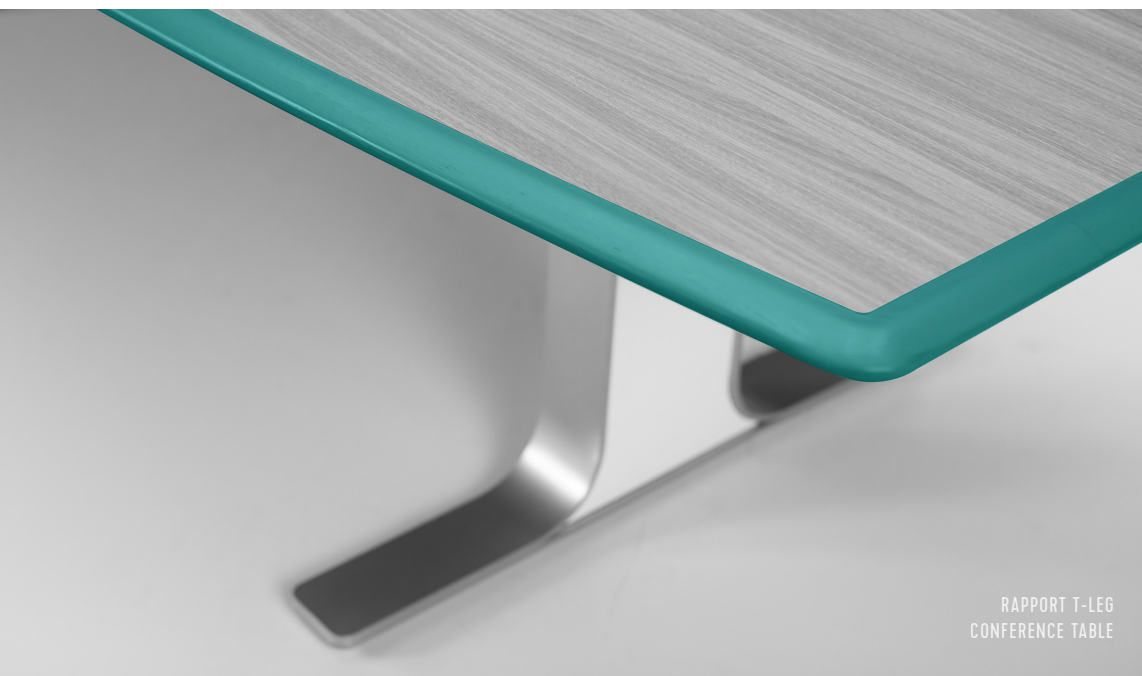


# HELLO CURRENTHANE

YOU'VE  
NEVER  
SEEN  
EDGES THIS  
STRONG



RAPPORT T-LEG  
CONFERENCE TABLE





---

POLYURETHANE EDGES TAKE YOUR TABLES TO THE NEXT LEVEL. THEY'RE RENEWABLE AND BOOST YOUR LEED CREDITS. THEY'RE UNBELIEVABLY DURABLE. THEY'RE A CINCH TO CLEAN. AND THEY LOOK GOOD, TOO.

IF YOU HAVEN'T HEARD OF URETHANE BEFORE (OR EVEN IF YOU HAVE), YOU'VE COME TO THE RIGHT PLACE. KEEP READING, AND LET SURFACEWORKS WORK OUT THE DETAILS.







# WHAT IS POLYURETHANE?

Polyurethane is a resin built from a mixture of compounds designed for a variety of industrial, heavy-duty uses. Often referred to as urethane (technically speaking, polyurethane is made from multiple urethane groups), you'll find this material in all sorts of familiar settings: the soles of your shoes, your car's dashboard and steering wheel, skateboard and shopping cart wheels and so many more. Our favorite use? Table edges.

---

## EDGE MATERIAL 101

At SurfaceWorks, there are five types of table edge materials: vinyl t-edge, edgeband, laminate postform, wood and urethane. Available in a variety of treatments, each material is aesthetically flexible for any space. But when it comes to heavy-use and sanitation-critical purposes, urethane edges are a no-brainer.





CLARA TABLE

### URETHANE: AN EDGE UP ON THE REST

Unlike other edge materials, urethane permanently bonds to the table. And with its macho-strength qualities, urethane comes with a host of benefits that make it ideal for industrial and commercial applications.

### BOOST YOUR LEED CRED

Made with 65% soybean oil and without VOCs and formaldehyde, polyurethane is rapidly renewable and can contribute to LEED credits.





# DURABILITY MEETS COMFORT

---

EXTREMELY DURABLE, URETHANE EDGES ARE PERFECT  
FOR HEAVY-USE APPLICATIONS SUCH AS OFFICE,  
EDUCATION, HEALTHCARE AND HOSPITALITY.

IN A 160 INCH-POUND IMPACT TEST, URETHANE EDGES  
ABSORBED THE IMPACT WITHOUT DENTING OR CRACKING.



## NO DENTS OR CRACKS

Urethane withstands even the toughest punctures, bumps and blows. Not even a scratch with the 160 inch-pound impact test (other edge materials tap out at 40 inch-pounds).

## LET THERE BE LIGHT

Don't think twice about placing these edges in a well-lit space. Our urethane edges contain UV stabilizers which protect them from color fade and material breakdown.

## ARM-FRIENDLY

Available in arm-friendly curves and no-drip profiles, urethane edges ergonomically keep your arms happy. And smooth to the touch, they're the perfect balance between tough and comfy.





GET AN  
EDGE  
ON CLEAN







### NO LEAKS, NO SEEPS

Permanently bonded to the table, space between the edge and the laminate is eliminated, creating a seamless seal and keeping liquids and bacteria far, far away. Plus, antimicrobial properties inherent with polyurethane make urethane edges ideal for healthcare, education and food service.

### A CINCH TO CLEAN

Because urethane is tough as nails and lock-tight on a table's edge, hot water and soap is all you need for most applications, however, stronger cleaners such as Formula 409® are perfectly suitable when required.



# OPTIONS FOR DAYS

---

WITH NINE EDGE PROFILES, TWO TEXTURES AND THREE DIFFERENT EDGE APPLICATIONS TO CHOOSE FROM, YOUR OPTIONS ARE VAST. PLUS, CHOOSE FROM 60 STANDARD URETHANE COLORS, OR CUSTOM MATCH YOUR OWN COLOR, AND YOUR POSSIBILITIES ARE ENDLESS.

## EDGE PROFILES

Available in nine profiles from ergonomic with arm-friendly curves to a no-drip profile that contains spills.



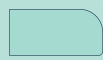
ultra-flex



comfort



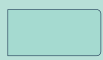
knife



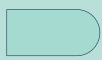
waterfall



traditional



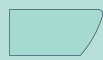
eased



bullnose



no-drip



curved knife

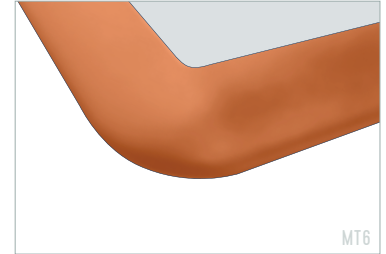




# EDGE APPLICATIONS

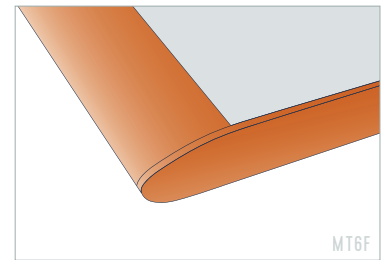
## A-SERIES

- Urethane profile on all sides of the table
- Ideal for conference, meeting & hospitality spaces



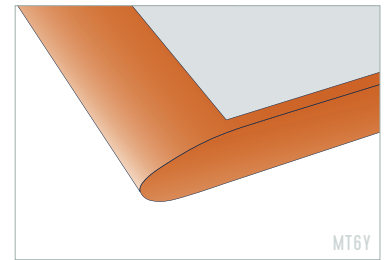
## F-SERIES

- Urethane profile on user side only
- Matching edgeband on non-user/connecting sides allows training tables, classroom tables or worksurfaces to be easily joined together
- Accommodates non-standard top lengths and curved shapes



## Y-SERIES

- Urethane profile on user side, with a seamless transition to flat urethane edge on non-user/connecting sides
- Provides a wider color selection and durability of urethane while still allowing tables to be easily joined together
- Perfect for training tables that are reconfigured frequently

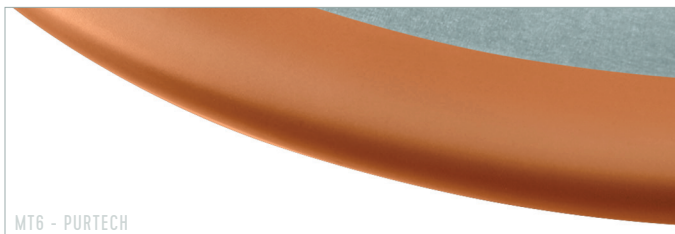


# TEXTURES

SurfaceWorks offers two types of urethane edge textures.

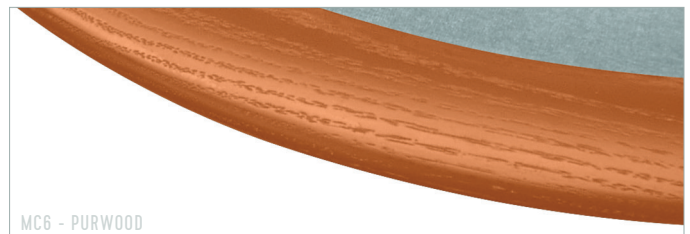
## PURTECH®

- Durable urethane with a smooth texture
- Friendly to the touch
- Provides a sleek design aesthetic not available with conventional edge treatments
- Available in A, F and Y-Series



## PURWOOD®

- The durability of urethane with the appearance of wood
- Provides a residential look, perfect for more traditional environments such as assisted living facilities or courthouses
- Available in A and F-Series





# BUILDING YOUR TABLES

SURFACEWORKS.US | P 414.570.2677 | F 414.570.2676  
7821 S. 10th Street | Oak Creek, WI 53154

---

